

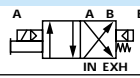
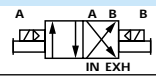
Function	Port size	Flow (Max)	Individual mounting
4/2	1/8" - 1/4"	0.7 C _v	inline

OPERATIONAL BENEFITS

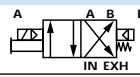
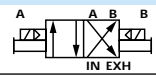
- Balanced spool, immune to variations of pressure.
- Short stroke with high flow.
- The piston (booster) provides maximum shifting forces.
- Powerful return force thanks to the combination of mechanical and air springs.
- Bonded spool with minimum friction, shifting in a glass-like finished bore.
- Wiping effect eliminates sticking.
- Pilot valve with balanced poppet, high flow, short and consistent response times.
- Long service life.



HOW TO ORDER

Port size	Pilot air	Single operator	Double operator
			
1/8" NPTF	Internal	711C-11-PI- XXYZ	721C-11-PI- XXYZ
1/4" NPTF	Internal	711C-12-PI- XXYZ	721C-12-PI- XXYZ
1/8" NPTF	External	711C-11-PE- XXYZ	721C-11-PE- XXYZ
1/4" NPTF	External	711C-12-PE- XXYZ	721C-12-PE- XXYZ

HOW TO ORDER VALVE WITH FLOW CONTROLS

Port size	Pilot air	Single operator	Double operator
			
1/8" NPTF	Internal	712C-11-PI- XXYZ	722C-11-PI- XXYZ
1/4" NPTF	Internal	712C-12-PI- XXYZ	722C-12-PI- XXYZ
1/8" NPTF	External	712C-11-PE- XXYZ	722C-11-PE- XXYZ
1/4" NPTF	External	712C-12-PE- XXYZ	722C-12-PE- XXYZ

SOLENOID OPERATOR ►

XX Y ZZ

XX	Voltage	Y	Manual operator	ZZ	Electrical connection
11	120/60, 110/50	1	Non-locking	JB	Rectangular connector
12	240/60, 220/50	2	Locking	JD	Rectangular connector with light
22	24/50, 24/60			JA	Square connector
59	24 VDC (2.5 W)			JC	Square connector with light
87	24 VDC (17.1 W)			BA	Flying leads (18")
61	24 VDC (8.5 W)			CA	Conduit 1/2" NPS

OPTIONS

7XXC-XX-PX-[XXYZ](#)

- For bottom ports (1/8" only) replace by 2.

TECHNICAL DATA

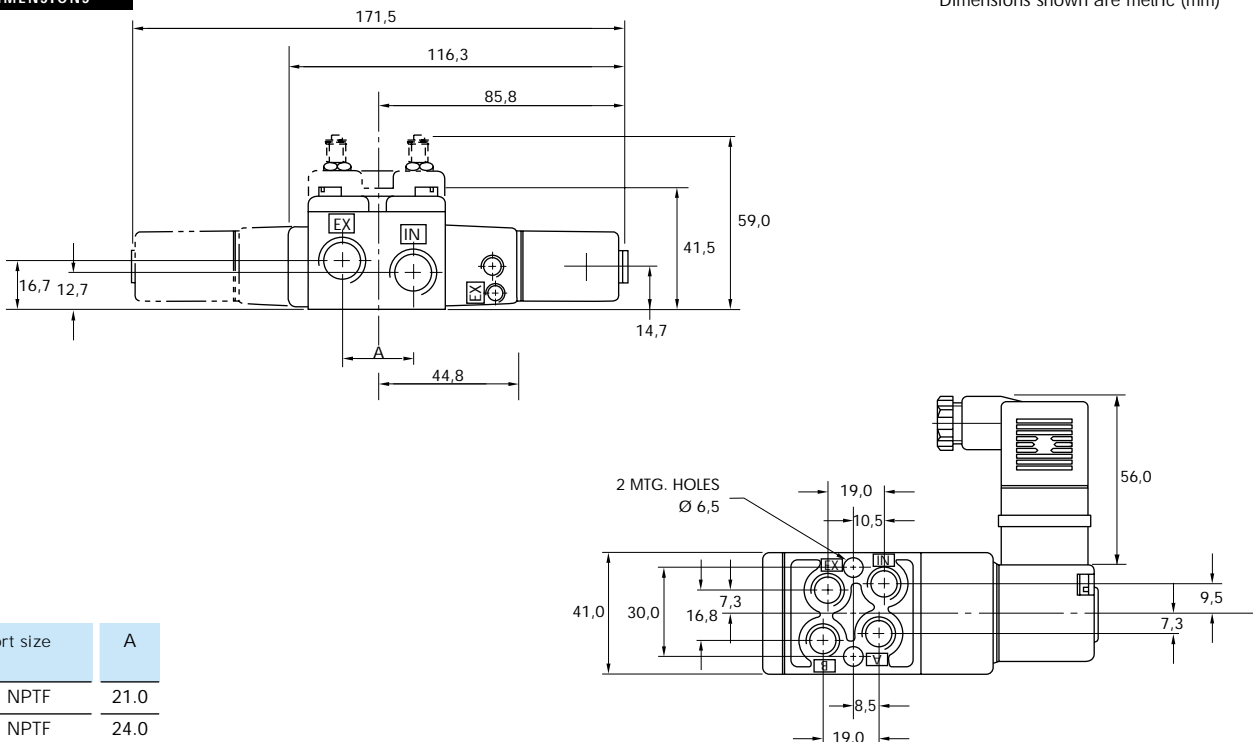
Fluid :	Compressed air, vacuum, inert gases
Pressure range :	Internal pilot : single operator : 20 to 150 PSI double operator : 10 to 150 PSI External pilot : vacuum to 150 PSI
Pilot pressure :	Single operator : 20 to 150 PSI Double operator : 10 to 150 PSI
Lubrication :	Not required, if used select a medium aniline point lubricant (between 180°F to 210°F)
Filtration :	40 μ
Temperature range :	0°F to 120°F (-18°C to 50°C)
Flow (at 6 bar, ΔP=1bar) :	1/8" : (0.6 C _v), 1/4" : (0.7 C _v)
Leak rate :	50 cm ³ /min
Coil :	General purpose class A, continuous duty, encapsulated
Voltage range :	-15% to +10% of nominal voltage
Protection :	Consult factory
Power :	~ Inrush : 14.8 VA Holding : 10.9 VA = 1 to 17.1 W
Response times :	24 VDC (8.5 W) Energize : 6.4 ms De-energize : 8.5 ms 120/60 Energize : 4-10 ms De-energize : 7-13 ms

- Spare parts :
- Solenoid operator (power ≥ 4 W) : D1-XXAA, cover mounting screws 35206 and seal 16234.
 - Pilot valve : PID-XYZZ, including mounting screws 35214 and seal 16363.
 - Valve cover plate with integral flow controls : N-07002.

- Options :
- BSPP threads.

DIMENSIONS

Dimensions shown are metric (mm)



Port size	A
1/8" NPTF	21.0
1/4" NPTF	24.0