

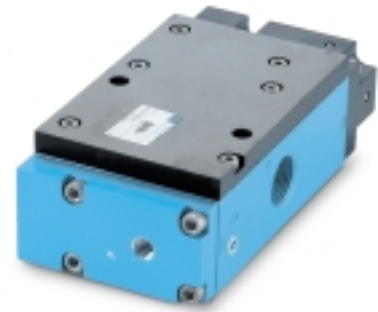


R e m o t e a i r v a l v e s

Function	Port size	Flow [Max]	Individual mounting	Series
3/2	3/4" - 1"	20.0	Inline	

OPERATIONAL BENEFITS

1. Balanced spool, immune to variations of pressure.
2. Powerful return forces thanks to the combination of mechanical and air springs.
3. Bonded spool with minimum friction, shifting in a glass like finished bore.
4. Wiping effect eliminates sticking.
5. Long service life.



400

67

ISO 2

ISO 3

HOW TO ORDER

Port size	Pilot air	Single Operator		Double Operator	
		NO Valve	NC Valve	NO Valve	NC Valve
3/4" NPTF	Internal	67A-C3-ARA-RA	67A-A3-ARA-RA	67A-D4-ARA-RA	67A-B4-ARA-RA
1" NPTF		67A-C3-BRA-RA	67A-A3-BRA-RA	67A-D4-BRA-RA	67A-B4-BRA-RA
3/4" NPTF	External	67A-C3-ARB-RE	67A-A3-ARB-RE	-	-
1" NPTF		67A-C3-BRB-RE	67A-A3-BRB-RE	-	-

Note : Designation 'RE' required on remote air models with main valve pressures of vacuum to 20 PSI.
 'RE' provides an external pilot and should have a pressure range of 20 - 75 PSI. Since the external pilot supplies the air spring, it must not exceed the remote air pilot pressure.



100%
OF
PRODUCTION
TESTED
100%

WARRANTY
18
MONTHS

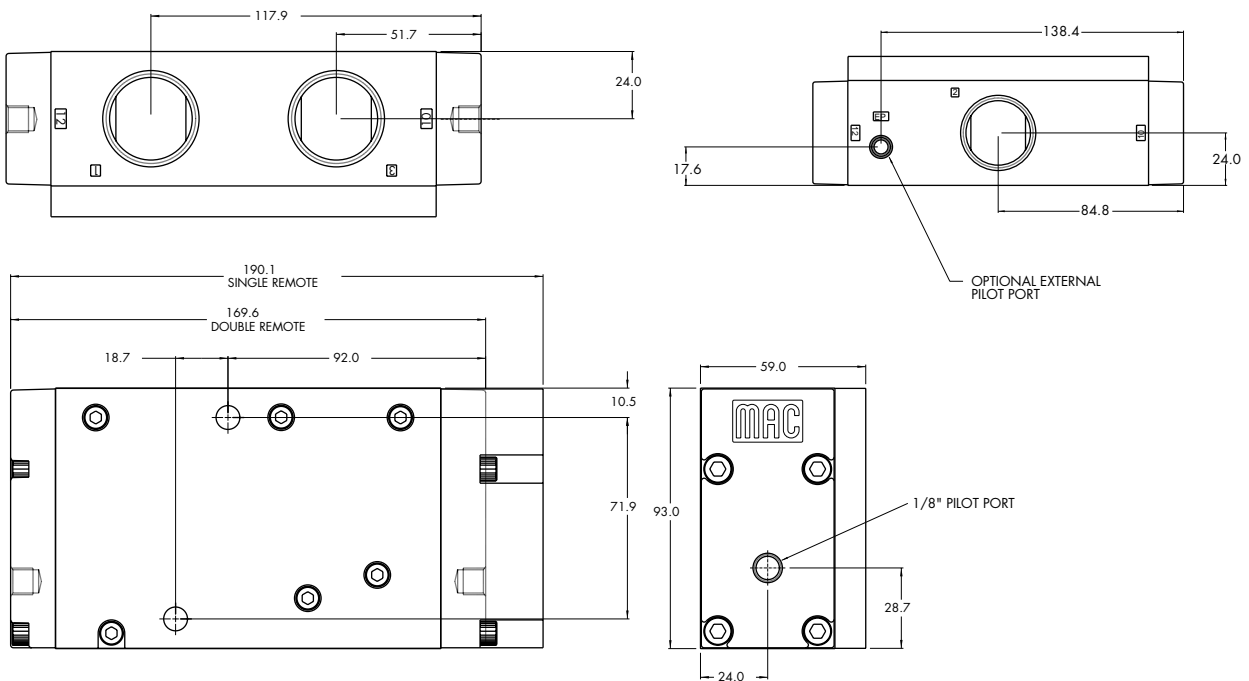
TECHNICAL DATA

Fluid :	Compressed air, vacuum, inert gases
Pressure range :	Vacuum to 150 PSI
Air signal pressure :	20 to 150 PSI (must be \geq main valve pressure)
Lubrication :	Not required, if used select a medium aniline point lubricant (between 180°F to 210°F)
Filtration :	40 μ
Temperature range :	0°F to 120°F (-18°C to 50°C)
Flow :	3/4" : (14.5 C _v) - 1" : (20.0 C _v)

Options : • BSPP threads

DIMENSIONS

Dimensions shown are metric (mm)



Consult "Precautions" before use, installation or service of MAC Valves.