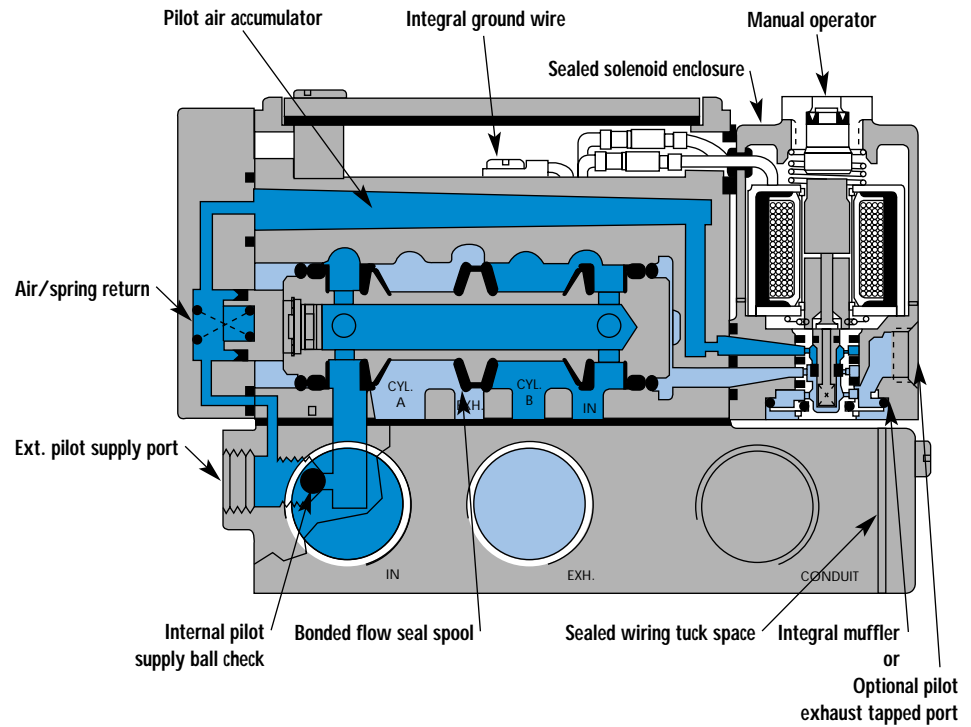


Individual mounting

sub-base non "plug-in"	sub-base "plug-in"
---------------------------	-----------------------

Manifold mounting

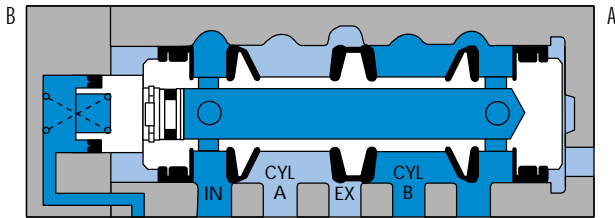
sub-base non "plug-in"	sub-base "plug-in"
---------------------------	-----------------------



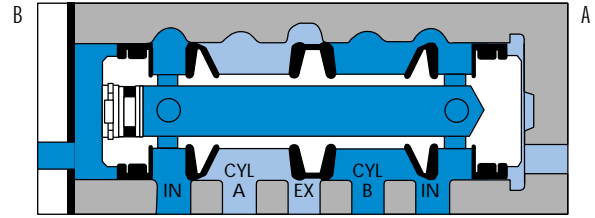
SERIES FEATURES

- The patented MACSOLENOID[®] with its non-burn out feature on AC service.
- A large checked accumulator for consistent shifting on single and double solenoid models.
- A plug-in design that provides for internal or external pilot with or without lights and all electrical and air plumbing in the base — the valve portion is the same.
- Non-lubricated or lubricated service.
- Optional low wattage DC solenoids down to 1 watt.
- Optional indicator lights, and various types of manual operators.
- Non plug-in or external plug-in models are available.

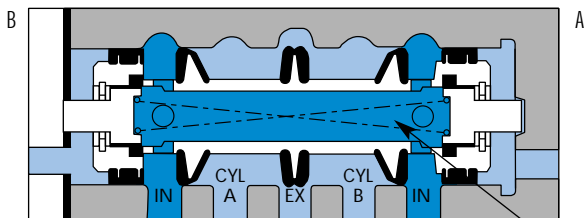
SPOOL CONFIGURATIONS



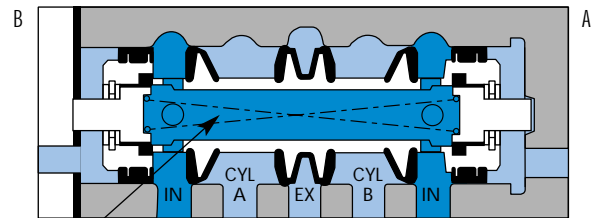
2 POS. SINGLE OPERATOR SPRING RETURN
B ACTUATED SHOWN



2 POS. DOUBLE OPERATOR
B ACTUATED SHOWN



3 POS. OPEN CENTER
CENTER POSITION SHOWN



3 POS. CLOSED CENTER
CENTER POSITION SHOWN

AIR/SPRING
CENTERING

VALVE CONFIGURATIONS AVAILABLE

The versatile 6300 Series provides high flow, extremely fast response, and long life in a compact package and is available in the following configurations:

- 2-Pos., single or double operators (solenoid or remote air).
- 3-Pos., double operator-Closed Center, Open Center or Pressure Center (solenoid or remote air).
- Single pressure.
- Dual pressure on manifolds with sandwich regulators.
- Individual base or add-a-unit manifold base.
- Internal pilot or for Vacuum to 25 PSI main valve pressures, external pilot.
- Manual and mechanical operators available.
- All models available with sandwich regulators.

REMOTE AIR PILOT OPERATED VALVES

These remote air versions feature:

- A large checked accumulator for air/spring return on single remote air models.
- Non-lubricated or lubricated service.
- All piping connections, including the remote air pilot supply, in the base.

REMOTE AIR PILOT, PILOT OPERATED VALVES

These special air versions have the same features as the remote air pilot operated models, but additionally feature:

- A manual operator and indicator.
- Remote air signal plug-in with optional integral air junctions in the base.
- Ability to use a pilot signal pressure different from the main valve pressure. Pilot signal can be from 20 to 150 PSIG, regardless of main valve pressure.

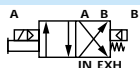
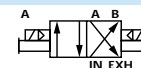
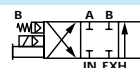
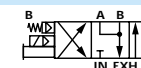
Function	Port size	Flow (Max)	Individual mounting
4/2 - 4/3	1/4" - 3/8" - 1/2"	3.0 C _v	sub-base non "plug-in"

OPERATIONAL BENEFITS

- Balanced spool, immune to variations of pressure.
- Short stroke with high flow.
- High shifting forces.
- Checked accumulator guarantees maximum pilot pressure.
- Powerful return force thanks to the combination of mechanical and air springs.
- Bonded spool with minimum friction, shifting in a glass-like finished bore.
- Wiping effect eliminates sticking.
- Pilot valve with balanced poppet, high flow, short and consistent response times.



HOW TO ORDER

Port size	Pilot air	4/2 Single operator	4/2 Double operator	4/3 Closed center	4/3 Open center
					
Valve less base		6312D-000-PM- XXYZZ	6322D-000-PM- XXYZZ	6332D-000-PM- XXYZZ	6342D-000-PM- XXYZZ
sub-base	Internal	6312D-131-PM- XXYZZ	6322D-131-PM- XXYZZ	6332D-131-PM- XXYZZ	6342D-131-PM- XXYZZ
1/4" NPTF	External	6312D-141-PM- XXYZZ	6322D-141-PM- XXYZZ	6332D-141-PM- XXYZZ	6342D-141-PM- XXYZZ
sub-base	Internal	6312D-231-PM- XXYZZ	6322D-231-PM- XXYZZ	6332D-231-PM- XXYZZ	6342D-231-PM- XXYZZ
3/8" NPTF	External	6312D-241-PM- XXYZZ	6322D-241-PM- XXYZZ	6332D-241-PM- XXYZZ	6342D-241-PM- XXYZZ
sub-base	Internal	6312D-331-PM- XXYZZ	6322D-331-PM- XXYZZ	6332D-331-PM- XXYZZ	6342D-331-PM- XXYZZ
1/2" NPTF	External	6312D-341-PM- XXYZZ	6322D-341-PM- XXYZZ	6332D-341-PM- XXYZZ	6342D-341-PM- XXYZZ

Note : Above codes shown are for side ports.

SOLENOID OPERATOR ►

XX Y ZZ

XX	Voltage	Y	Manual operator	ZZ	Electrical connection
11	120/60, 110/50	1	Non-locking	JB	Rectangular connector
12	240/60, 220/50	2	Locking	JD	Rectangular connector with light
22	24/60, 24/50			JA	Square connector
59	24 VDC (2.5 W)			JC	Square connector with light
87	24 VDC (17.1 W)			BA	Flying leads (18")
61	24 VDC (8.5 W)				

Note : Photo shown with JC connector.

OPTIONS

6312D-XXX-PM-**XXYZZ**

- For piped pilot exhaust replace M by P.
- For bottom cylinder ports (excluding 1/2"), replace by 4.
- For dual pressure valves (see section 6 for use with sandwich regulators), replace by 5.

Note : 1. The valve less base is always the same for internal or external pilot. These options are effected in the base.

2. To order bases without the valve, choose the base from the above table, then add 6300D as a prefix. Example 6300D-131.

TECHNICAL DATA

Fluid :	Compressed air, vacuum, inert gases	
Pressure range :	Internal pilot : single operator and 3 positions : 25-150 PSI	double operator : 10-150 PSI
	External pilot : vacuum to 150 PSI	
Pilot pressure :	Single operator and 3 positions : 25-150 PSI Double operator : 10-150 PSI	
Lubrication :	Not required, if used select a medium aniline point lubricant (between 180°F to 210°F)	
Filtration :	40 μ	
Temperature range :	0°F to 120°F (-18°C to 50°C)	
Flow (at 6 bar, ΔP=1bar) :	1/4" (2.0 C _v), 3/8" : (2.6 C _v), 1/2" (3.0 C _v)	
Leak rate :	100 cm ³ /min	
Coil :	Epoxy encapsulated - class A wires - Continuous duty.	
Voltage range :	-15% to +10% of nominal voltage	
Protection :	Consult factory	
Power :	~ Inrush : 14.8 VA Holding : 10.9 VA = 1 to 17.1 W	
Response times :	24 VDC (8.5 W)	Energize : 10 ms De-energize : 11 ms
	120/60	Energize : 4-13 ms De-energize : 10-17 ms

Spare parts :

- Solenoid operator (power ≥ 4 W) : D1-XXAA, cover mounting screws 35206 and seal 16234.
- Pilot valve : PME-XXYZZ, including seal 16337. • Pressure seal between valve and base : 16298.
- Mounting screw valve to base (x4) : 35303.

Options :

- BSPP threads.

DIMENSIONS

Dimensions shown are metric (mm)

