



R e m o t e a i r v a l v e s

Function	Port size	Flow (Max)	Individual mounting
3/2 NO-NC, 2/2 NO-NC	2" - 2 1/2"	65.0 C _v	Inline

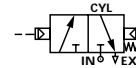
OPERATIONAL BENEFITS

- Balanced spool, immune to variations of pressure.
- Short stroke with high flow.
- The piston (booster) provides maximum shifting forces.
- Powerful return thanks to the combination of mechanical and air springs.
- Bonded spool with minimum friction, shifting in a glass-like finished bore.
- Wiping effect eliminates sticking.
- Low leakage rate.



HOW TO ORDER

Port size	Air spring	NC valve
2" NPTF	Internal	59B-52-RA
2 1/2" NPTF	Internal	59B-53-RA
2" NPTF	External	59B-52-RE
2 1/2" NPTF	External	59B-53-RE



Air pilot port : 1/8" NPTF.

Note: Designation "RE" required on remote air pilot models with main valve pressures of vacuum to 25 PSI. "RE" provides an external pilot port and should have a pressure range of 25-75 PSI. Since the external pilot supplies the air spring, it must not exceed the remote air pilot signal pressure.

TECHNICAL DATA

Fluid :	Compressed air, vacuum, inert gases
Pressure range :	Vacuum to 150 PSI
Air signal pressure :	25 - 150 PSI \geq main valve pressure
Lubrication :	Not required, if used select a medium aniline point lubricant (between 180°F to 210°F)
Filtration :	40 μ
Temperature range :	0°F to 120°F (-18°C to 50°C)
Flow (at 6 bar, $\Delta P=1\text{bar}$) :	2" : (60.0 C _v), 2 1/2" : (65.0 C _v)
Leak rate :	150 cm ³ /min

Spare parts : • Remote air pilot block : R-59003. • Check valve : 70019.

Options : • BSPP threads.

DIMENSIONS

Dimensions shown are metric (mm)

