

Individual mounting

Inline

Series

34

36

32

37

38

52

67

44

46

42

47

48

400

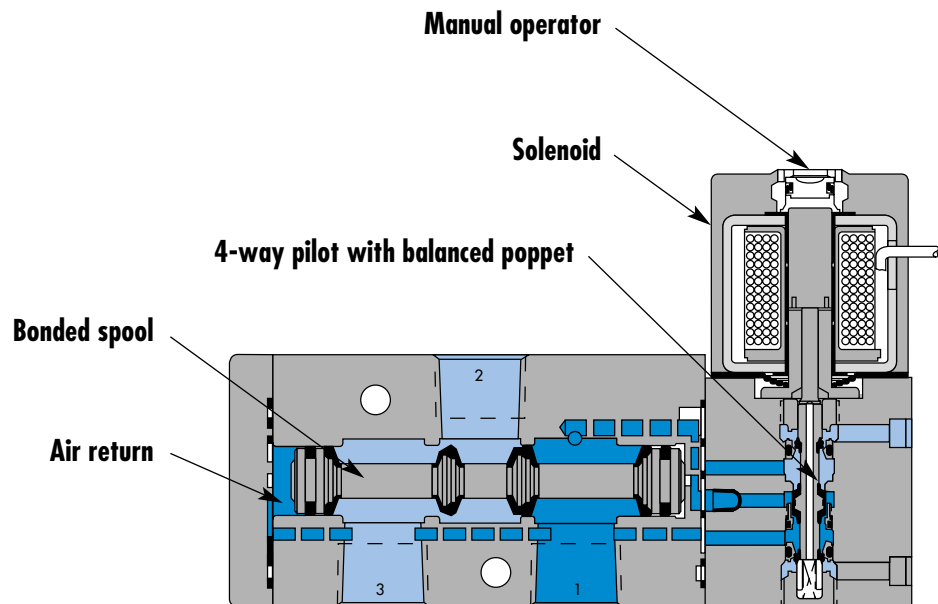
92

93

ISO 1

ISO 2

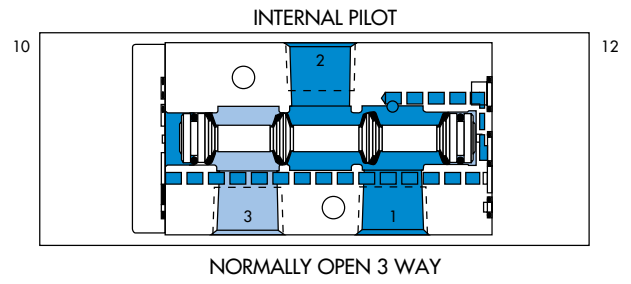
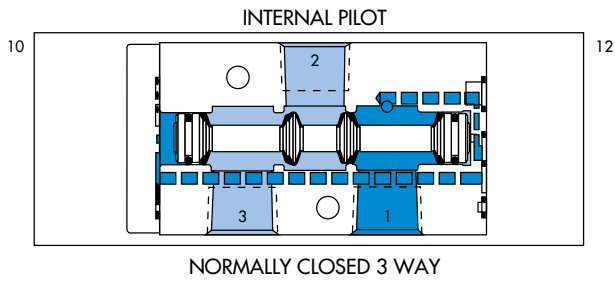
ISO 3



SERIES FEATURES

- Patented MACSOLENOID[®] for fastest possible response times and virtually burn-out proof AC solenoid operation.
- Optional low watt DC solenoids.
- Various manual operators.
- Optional memory spring.
- Normally closed or normally open valve function.
- May be plugged for 2-way operation.
- Internal or external pilot.

SPOOL CONFIGURATIONS





Direct solenoid and solenoid pilot operated valves

Function	Port size	Flow [Max]	Individual mounting	Series
3/2 NO-NC, 2/2 NO-NC	1/8" - 1/4"	1.5 C_v	Inline	

OPERATIONAL BENEFITS

1. The 4-way pilot develops maximum shifting force both ways.
2. Memory spring available.
3. Balanced spool, immune to variations of pressure, also provides high flow.
4. Short stroke with high flow.
5. Bonded spool with minimum friction, shifting in a glass-like finished bore.
6. Pilot with balanced poppet, high flow, short and consistent response times.
7. Wiping effect eliminates sticking.
8. Long service life.



HOW TO ORDER

Port size	Pilot air	Single Operator		Double Operator	
		NO Valve	NC Valve	NO Valve	NC Valve
1/8" NPTF	Internal	52A-31-A0A-XX-X- xxx-xxx	52A-11-A0A-XX-X- xxx-xxx	52A-41-A0A-XX-X- xxx-xxx	52A-21-A0A-XX-X- xxx-xxx
1/4" NPTF	Internal	52A-31-B0A-XX-X- xxx-xxx	52A-11-B0A-XX-X- xxx-xxx	52A-41-B0A-XX-X- xxx-xxx	52A-21-B0A-XX-X- xxx-xxx
1/8" NPTF	External	52A-31-A0B-XX-X- xxx-xxx	52A-11-A0B-XX-X- xxx-xxx	52A-41-A0B-XX-X- xxx-xxx	52A-21-A0B-XX-X- xxx-xxx
1/4" NPTF	External	52A-31-B0B-XX-X- xxx-xxx	52A-11-B0B-XX-X- xxx-xxx	52A-41-B0B-XX-X- xxx-xxx	52A-21-B0B-XX-X- xxx-xxx

SOLENOID OPERATOR >

DM-D **xxx-xxx***

XX	Voltage	X	Wire length	X	Manual operator	XX	Electrical connection
JA	110/50, 120/60 (2.9W)	A	18" (Flying leads)	1	Non-locking recessed	KA	Square connector
JB	220/50, 240/60 (2.9W)	B	24" (Flying leads)	2	Locking recessed	KD	Square connector with light
JC	24/60 (2.9W)	J	Connector			JB	Rectangular connector
FB	24 VDC (1.8W)					JD	Rectangular connector with light
DA	24 VDC (5.4W)					BA	Flying leads
DF	24 VDC (12.7W)						

SOLENOID OPERATOR >

GM-G **xxx-xxx****

XX	Voltage	X	Wire length	X	Manual operator	XX	Electrical connection
DC	24 VDC (1.8W)	A	18"	1	Non-locking recessed	BA	Flying leads
DD	24 VDC (2.5W)	B	24"	2	Locking recessed	BT	Flying leads with light
DF	24 VDC (4.0W)	C	36"			KA	Plug-in wire assy.
						KT	Plug-in wire assy. with light

* Click here for other options available.
 ** Click here for other options available.

OPTIONS

52A-31-A0A-XX-X-**xxx-xxx**
 For memory spring, replace by **4** (single solenoid only)

34

36

32

37

38

52

67

44

46

42

47

48

400

92

93

ISO 1

ISO 2

ISO 3

TECHNICAL DATA

Fluid :	Compressed air, vacuum, inert gases
Pressure range :	Internal Pilot : 20 to 120 PSI External Pilot : Vacuum to 120 PSI
Lubrication :	Not required, if used select a medium aniline point lubricant (between 180°F and 210°F)
Filtration :	40 μ
Temperature range :	0°F to 120°F (-18°C to +50°C)
Flow :	1/8" : (1.2 C _v) – 1/4" : (1.5 C _v)
Coil :	Class A continuous duty, #22 AWG x 18 lead wires
Voltage range :	-1.5% to +10% of nominal voltage
Protection :	Consult factory
Power :	~Inrush: 10.9 VA Holding: 7.7 VA = 1.8 to 12.7 W
Response times :	24V=5.4W Energize: 7.3 ms De-energize: 5.3 ms 120/60 Energize: 8-12 ms De-energize: 7-11 ms

Options : • BSPP threads

DIMENSIONS

Dimensions shown are metric (mm)

