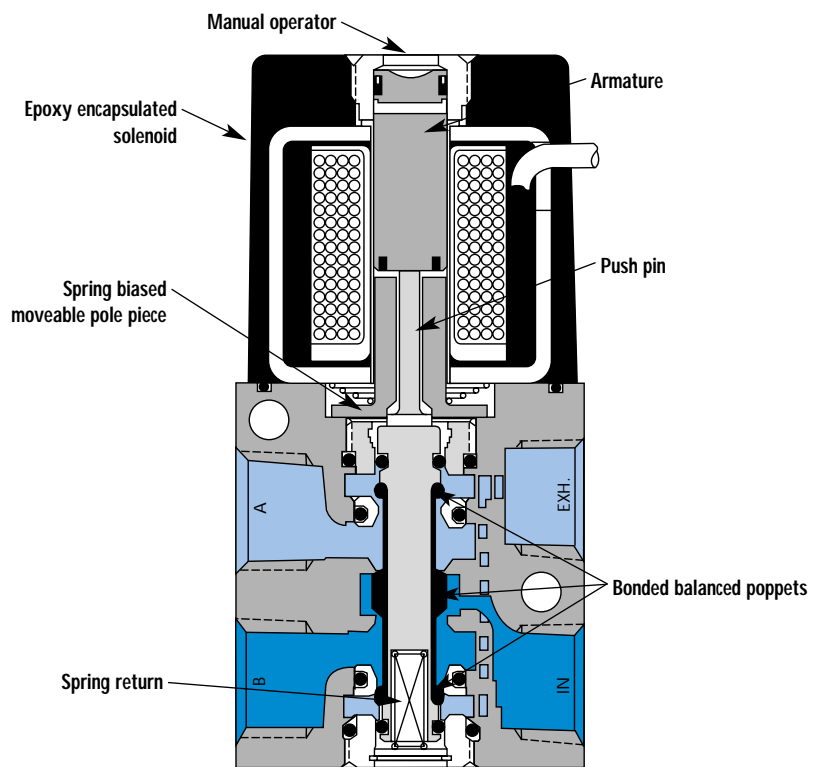


## Individual mounting

inline	sub-base non"plug-in"
--------	-----------------------

## Manifold mounting

stacking	sub-base non"plug-in"	sub-base with pressure regulators	sub-base with pressure regulators and flow controls
----------	-----------------------	-----------------------------------	---



## SERIES FEATURES

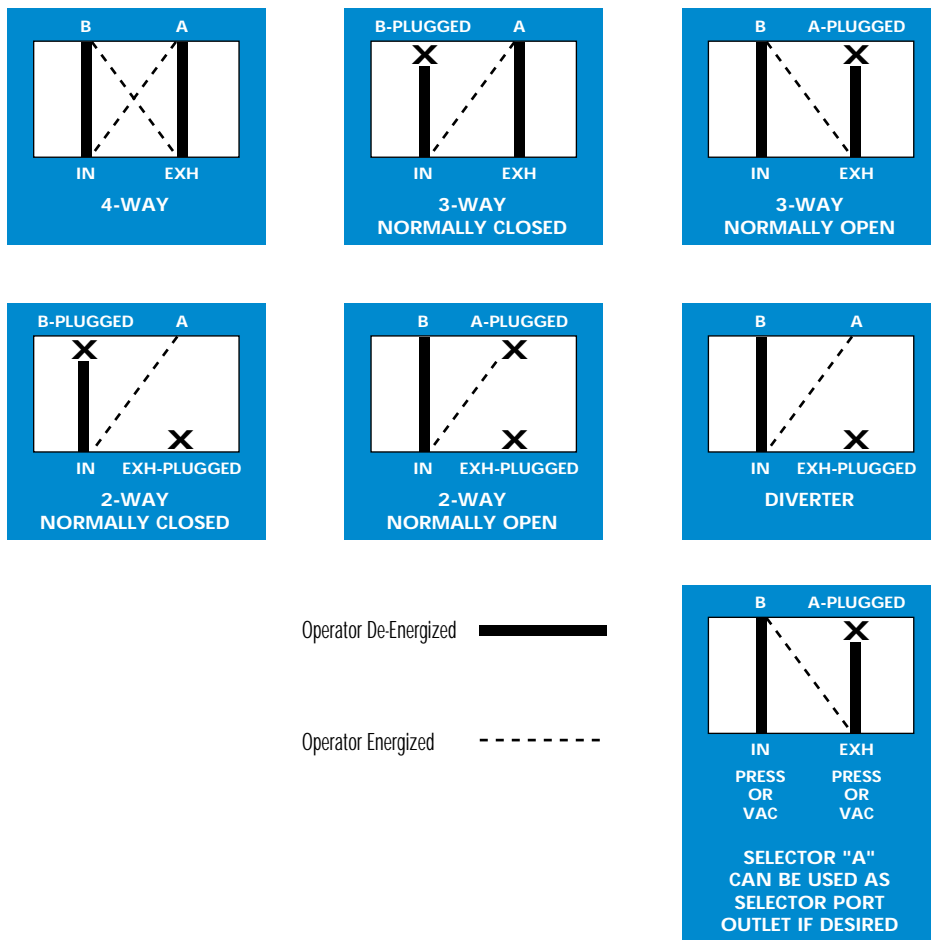
- Single and double solenoid or remote air.
- The patented MACSOLENOID® for fastest possible response times.
- Bonded balanced poppets for high flow, precise repeatability, and consistent operation.
- Balanced poppet design permits versatility in pipping. Valves can be piped as 4-way, 3-way or 2-way, normally closed or normally open or can be used for vacuum, diverter or selector applications.
- Use on lube or non-lube service.
- Extremely high cycle rates.
- Extremely long service life due to unique poppet cushions.
- Manual overrides as standard.
- Various solenoid enclosures and plug-in connectors
- Optional surge suppression available.
- Low wattage DC solenoids — down to 1.8 watts.
- Patented MACSOLENOID® — virtually burn-out proof on AC service.

**VALVE CONFIGURATIONS AVAILABLE**

- 2-position single and double solenoid or remote air.
- Single pressure (4 or 5 ports)
- Individual, stacking and manifold base mounted models.
- Integral individual exhaust flow controls with common exhaust port.
- Integral regulators and flow controls on manifolds.

**SPECIAL APPLICATIONS :**

The balanced poppet design facilitates using the same valve for many functions and can be used for pressure, vacuum or plugged without the necessity of changing any parts. Piping suggestions are shown in the chart below.



Function	Port size	Flow (Max)	Individual mounting
4/2	#10-32 - 1/8"	0.15 C <sub>v</sub>	inline

**OPERATIONAL BENEFITS**

1. Balanced poppet, immune to variations of pressure.
2. Short stroke with high flow.
3. The patented solenoid develops high shifting forces.
4. Powerful return spring.
5. Manual operator standard on all valves.
6. Burn-out proof solenoid on AC service.



**HOW TO ORDER**

Port size	Single operator	Double operator (Minimum DC wattage 5.4W)
1/8" NPTF	45A-AA1-Dxxx-xxx	45A-GA1-Dxxx-xxx
# 10-32 UNF	45A-AB1-Dxxx-xxx	45A-GB1-Dxxx-xxx

**WITH INTEGRATED FLOW CONTROLS**

Port size	Single operator	Double operator (Minimum DC wattage 5.4W)
1/8" NPTF	45A-AA2-Dxxx-xxx	45A-GA2-Dxxx-xxx
# 10-32 UNF	45A-AB2-Dxxx-xxx	45A-GB2-Dxxx-xxx

**SOLENOID OPERATOR ►**

**D XX X- X XX**

<u>XX</u>	Voltage	<u>X</u>	Wire length	<u>X</u>	Manual operator	<u>XX</u>	Electrical connection
<u>AA</u>	120/60, 110/50	<u>A</u>	18" (Flying leads)	<u>1</u>	Non-locking	<u>KA</u>	Square connector
<u>AB</u>	240/60, 220/50	<u>J</u>	Connector	<u>2</u>	Locking	<u>KD</u>	Square connector with light
<u>AC</u>	24/60, 24/50					<u>JB</u>	Rectangular connector
<u>FB</u>	24 VDC (1.8 W)					<u>JD</u>	Rectangular connector with light
<u>DA</u>	24 VDC (5.4 W)					<u>BA</u>	Flying leads
<u>DF</u>	24 VDC (12.7 W)						

**BOTTOM PORT OPTIONS (O'RING MOUNT)**

45A-XXX-D xxx-xxx

- D-Sgl. oper. - All ports
- F-Sgl. oper. - "A" & "B" ports
- H-DbL. oper. - All ports
- J-DbL. oper. - "A" & "B" ports

**TECHNICAL DATA**

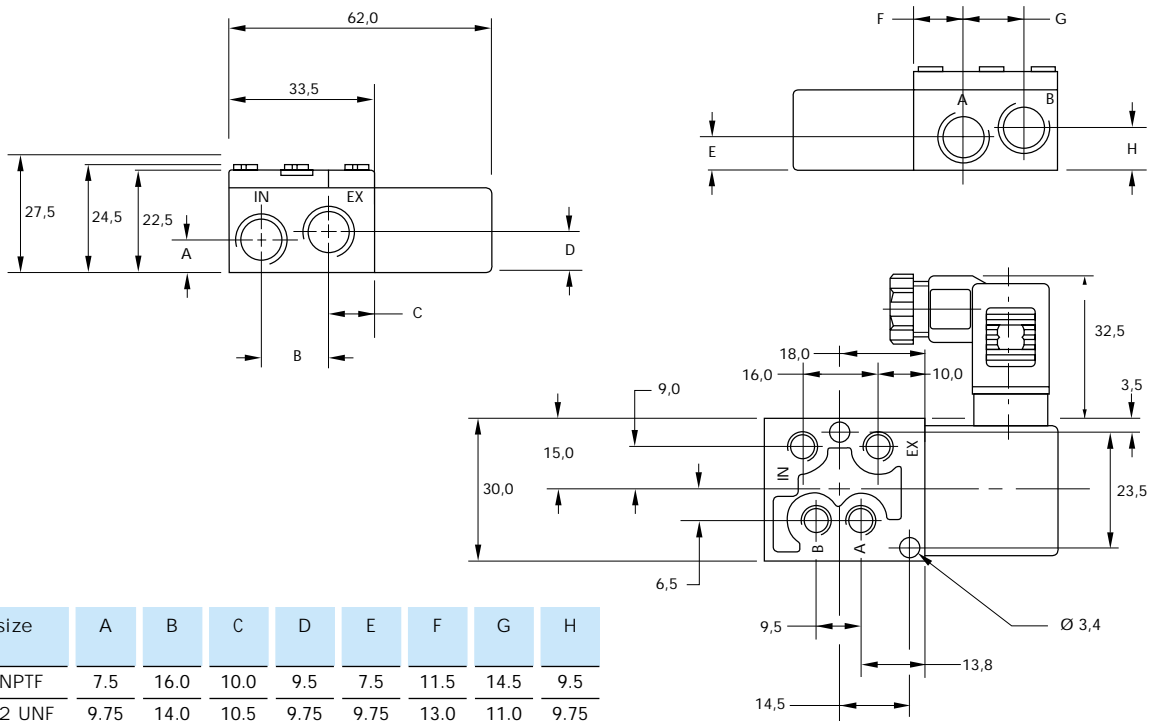
Fluid :	Compressed air, vacuum, inert gases		
Pressure range :	Vacuum to 120 PSI		
Lubrication :	Not required, if used select a medium aniline point lubricant (between 180°F and 210°F)		
Filtration :	40 µ		
Temperature range :	0°F to 120°F (-18°C to 50°C)		
Flow (at 6 bar, ΔP=1bar) :	1.8 W : (0.1 C <sub>v</sub> ), 5.4 W : (0.15 C <sub>v</sub> )		
Leak rate :	50 cm <sup>3</sup> /min		
Coil :	General purpose class A, continuous duty, encapsulated		
Voltage range :	-15% to +10% of nominal voltage		
Protection :	Consult factory		
Power :	~ Inrush : 10.9 VA      Holding : 7.7 VA = 1.8 to 12.7 W		
Response times :	24 VDC (5.4 W)	Energize : 6 ms	De-energize : 2 ms
	120/60	Energize : 3-8 ms	De-energize : 2-7 ms

Spare parts :      • Solenoid operator (power ≥ 5.4 W) : DXXX-XXX, including mounting screws 35013.  
                           • Seal (between solenoid and valve body) : 16402. • Valve cover plate with flow controls : N-45002.

Options :            • BSPP threads. • High flow up to 0.23 C<sub>v</sub>, according to wattage and high flow Mod. • NAMUR interface - 45A-FA1DXXX-XXX and required NAMUR adapter kit: N-45028-03 (for 3-way operation) - N-45028-04 (for 4-way operation).

**DIMENSIONS**

Dimensions shown are metric (mm)



Port size	A	B	C	D	E	F	G	H
1/8" NPTF	7.5	16.0	10.0	9.5	7.5	11.5	14.5	9.5
# 10-32 UNF	9.75	14.0	10.5	9.75	9.75	13.0	11.0	9.75