

Application Description

- On SIPA® SFR™ machines, the blow nozzle cylinder is ensuring the function of the mould closure (tightness), and guiding of the stretch cam.



Previous solution

Customer Requirements

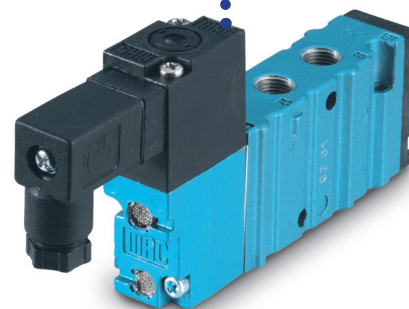
- Immunity to contamination.
- Repeatable response times.
- Longer life time.

MAC Solutions

421A-D0A-DM-DDAJ-2KJ Mod. 0650

Customer Benefits

- MAC design features.
- 4-way pilot.
- Insensitive to pressure variations.
- Insensitive to contamination.
- Lubrication free operation.
- Lifetime : approved 25 million cycles.
- Repeatable response times.
- Lighter & more compact package.
- Flow: 1000 NI/min.
- Fast response times.



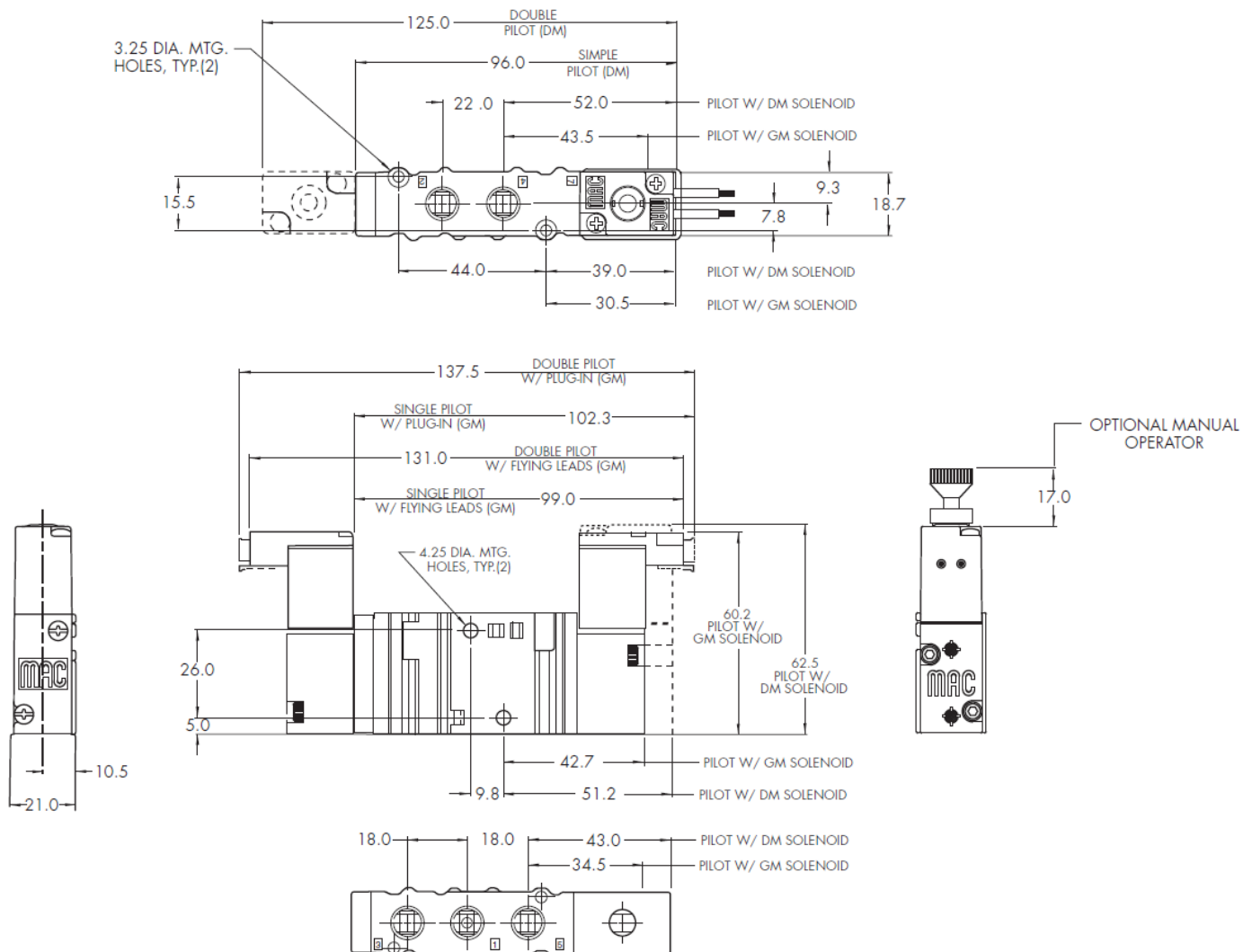
Cost Savings

- Savings realized in increased production, reduced labour cost and fewer replacement parts.

Technical Data

Fluid:	Compressed air, vacuum, inert gases
Pressure range:	1,3 to 8 bar
Pilot pressure:	1,3 to 8 bar
Lubrication:	Not required, if used select a medium aniline point lubricant (between 80°C and 100°C)
Filtration:	40µ
Temperature:	-18°C to 50°C
Flow (at 6 bar, Δ P=1bar):	1000 NI/min
Coil:	Epoxy encapsulated - class A wires - Continuous duty
Voltage range:	-15% to +10% of nominal voltage
Response times:	Energize: 7,3 ms De-energize: 5,3 ms

Dimensions



MVE-021-PL-MAR2012