

LIFT AXLE VALVE



- Can Be Mounted Directly to the Truck / Trailer Axle
- Designed to Quickly & Accurately Fill & Exhaust Bellows
- Eliminates the Need for External Quick Exhaust Valves
- Optimized for Reliable Performance in Harsh Environmental Conditions

Design Features = Performance Benefits

- High Flow Design (2.5 Cv) – Quickly and Accurately Raises and Lowers Axle – No Quick Exhausts Required
- Wide Temp. Seals - Wide Operational Temperature Range -- -30°C - +60°C
- Reduced Bracketing / Less Fittings / Less Tubing Connections - Reduced Labor and Improved Serviceability
- Dual Pressure Valve - Improved Regulator Life
- High Flow/Redundant Cylinder Ports - Simplified Plumbing



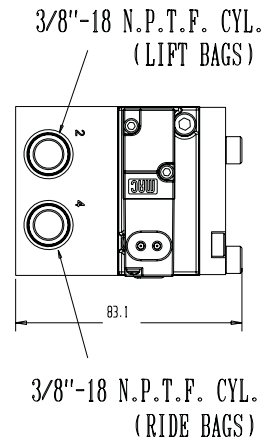
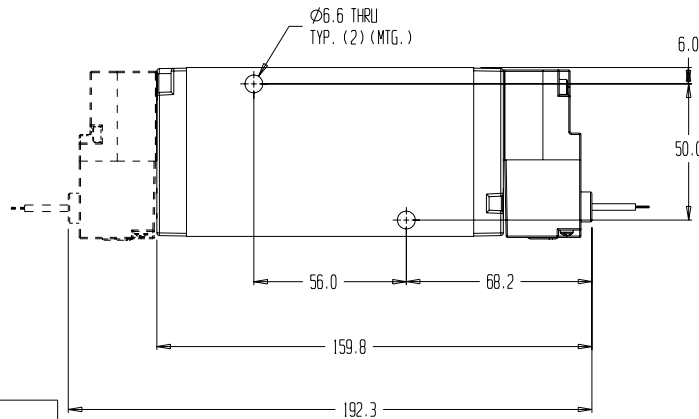
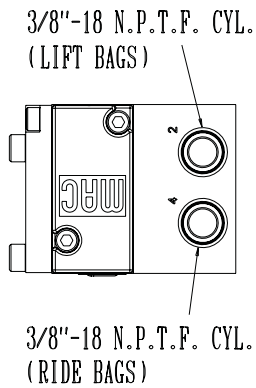
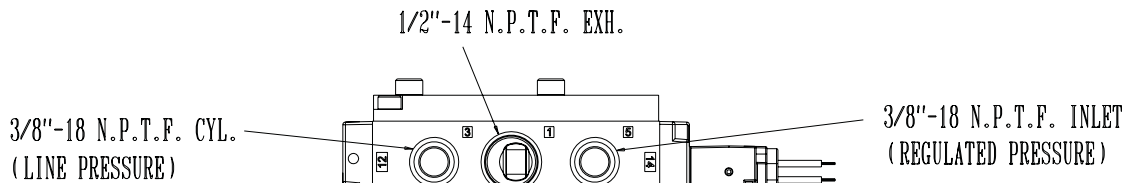
Industry Specific Modifications

- Corrosive Resistant Components

- Hard-Coat Anodized Aluminum
- Stainless Fasteners
- Salt Spray Resistant Paint
- Stainless Filter Screens In Porting
- NEMA 4

- Environmentally Sealed Electrical & Remote Air Operators

- 18awg Teflon Coated Flying Leads
- DIN Style (Lights and Spike Suppression Optional) with Molded Cord Sets
- Deutsch



PILOT OPTIONS:

